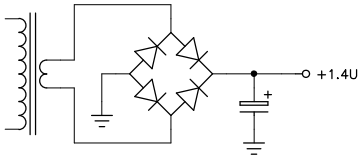
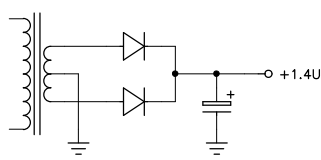


RECTIFIERS AND VOLTAGE DOUBLERS

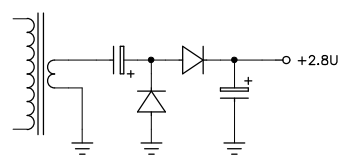
SIMPLE GRAETZ RECTIFIER



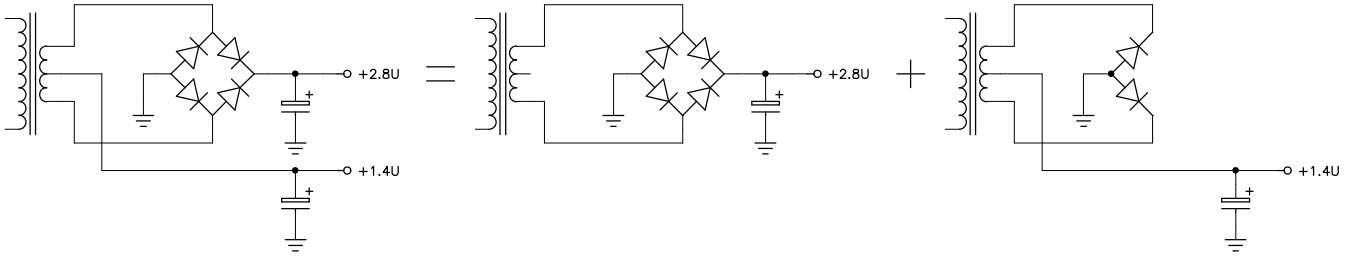
SIMPLE FULL WAVE RECTIFIER



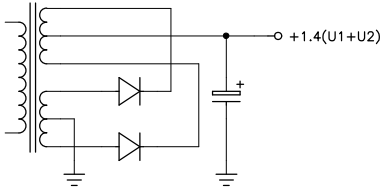
SIMPLE VOLTAGE DOUBLER



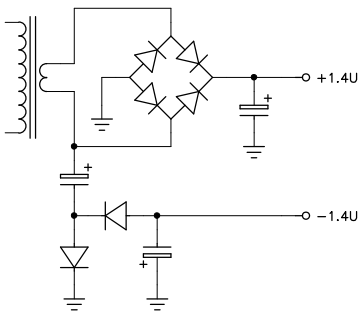
EXTRA HALF VOLTAGE CENTER TAP



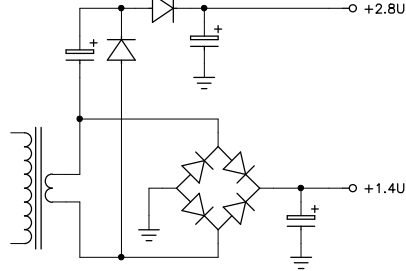
TWO CENTER TAPPED WINDINGS IN SERIES



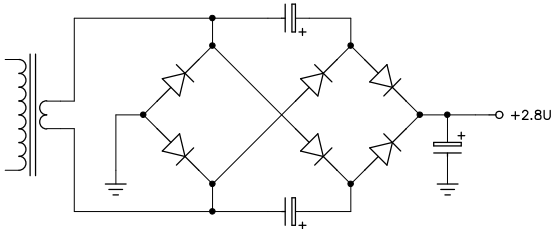
EXTRA NEGATIVE VOLTAGE



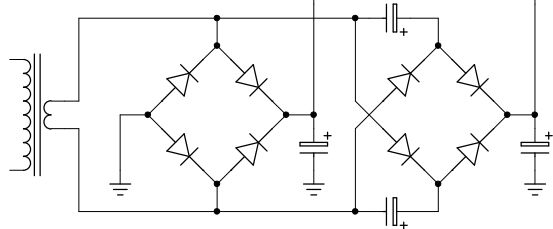
EXTRA DOUBLED POSITIVE VOLTAGE



FULL WAVE VOLTAGE DOUBLER



GRAETZ RECTIFIER WITH FULL WAVE VOLTAGE DOUBLER



EXTRA NEGATIVE VOLTAGE (FULL WAVE)

